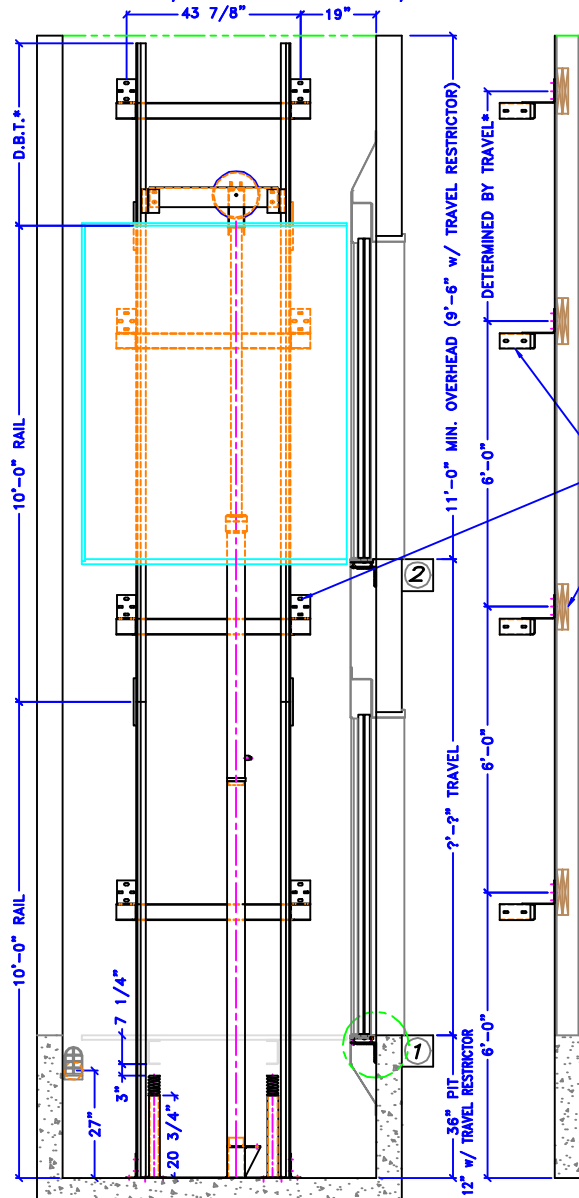


NOTE:
 PROVIDE WALL CONSTRUCTION SUITABLE FOR ATTACHMENT OF RAIL BRACKETS MIN. DOUBLED 2 x 12 x (THE FULL WIDTH OF HOISTWAY) AT ELEVATIONS SHOWN. WALL CONSTRUCTION @ EACH POINT MUST BE CAPABLE OF 500# PULLOUT LOADING w/ MAXIMUM DEFLECTION OF 1/8"

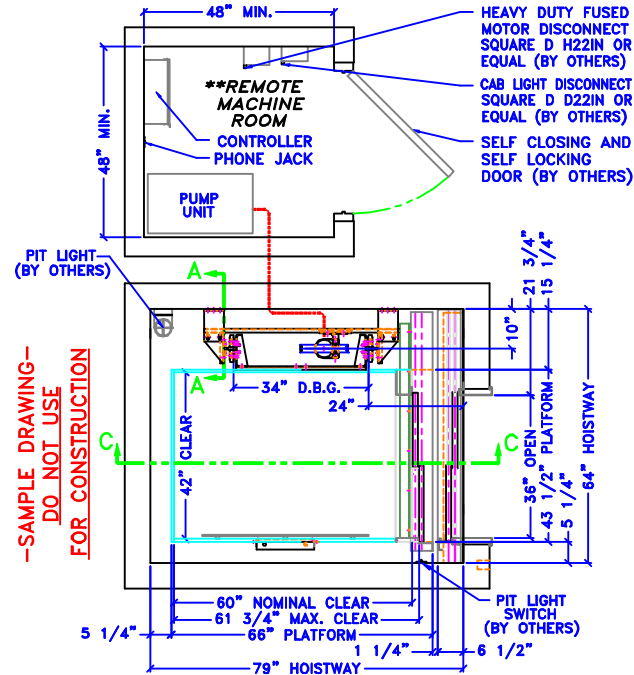


C-C HOISTWAY ELEVATION

A-A BRACKET LOCATIONS

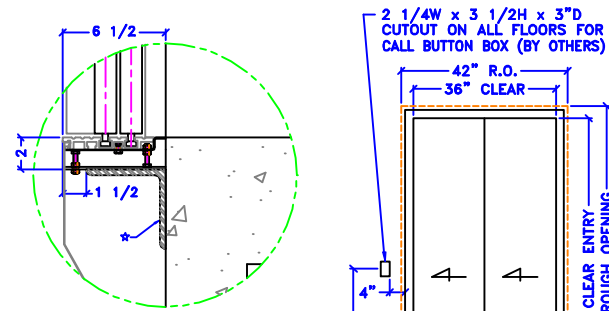
**-SAMPLE DRAWING-
 DO NOT USE
 FOR CONSTRUCTION**

RAIL BRACKET
 RAIL BRACKETS FASTENED w/ 5/16" LAGGS x 3" LG 2 pcs PER SIDE PER BRACKET
 WOOD STUD AND DRYWALL w/ 2 pcs 2 x 12 HORIZ. BACKING (BY OTHERS)



HOISTWAY PLAN

**MACHINE ROOM NO MORE THAN 25' FROM HOISTWAY ENTRY



SILL DETAIL

*G.C. TO PROVIDE SUPPORT AS SHOWN 5 x 5 ANGLE SHOWN - TYP

NOTE:
 LEAVE ROUGH OPENING MIN. 6" WIDER & 3" HIGHER THAN CLEAR OPENING, AS SHOWN.

HOISTWAY ENTRY ELEVATION

WORK BY OTHERS

- TO BE PROVIDED BY OWNER AND/OR GENERAL CONTRACTOR:**
- Legal hoistway of proper size, plumb within 1" per 100', and pit of proper depth.
 - A 12" square blackout in elevator pit floor, to be filled when plunger assembly has been installed.(X3)
 - 10" PVC cylinder casing per drawings.(X3)
 - Suitable machine room with legal access & clearances, properly heated & ventilated. Temperature not to exceed 35°C(95°F).
 - Hoistway guard & barricades during installation.
 - Supports for rail fastenings where specified.
 - Venting of hoistways as required by code.
 - All cutting of walls, floors, of partitions together with all repairs, grouting, patching, and painting made necessary by such cutting or changes.
 - Heavy duty fused main line switch in machine room for each elevator with feeders connected to each controller.
 - Lights, light switch, and convenience outlets in elevator machine room.
 - 120V/1Ø/2Øamp service & telephone outlet for each elevator connected to controller(s) in elevator machine room for car lights & accessories.
 - Light, light switch, and convenience outlet in elevator pit where required.
 - Finished cab floor coverings.
 - All other equipment necessary & not otherwise called for in elevator contract.

TIGER LIFT

MODEL	X5	SERVICE	BRD
SPEED	28 FPM	CAPACITY	750-1400
TRAVEL	?	OPERATION	SPM
NO. LANDINGS	2	NO. CAR GATES	1
CAB TYPE	STD	CAB COLOR	?
HANDRAIL TYPE	ALUMINUM	CEILING COLOR	WHITE
GATE TYPE	2 SPEED	GATE FINISH	STD
GATE OPERATION	AUTO	GATE SIZE	36"Ø
FLOOR DESIGNATION	1, 2	FIXTURE FINISH	SS#4
ILLUMINATE	X EMERG. LIGHT	MICROPRO.	
SCREW PUMP	AUTO LIGHT	RET. CAM	
FIRE SERVICE	RUPTURE VALVE	IN USE LT	
KEY SW/MOMENT	AUTO LOWER	TANK HT.	
ARRIVAL LIGHT	KEY SW/MAINT	AUTO DOOR	
ARRIVAL GONG	CAR TOP STATION	AUTO GATE X	
DOOR MONITOR	POSITION IND.	SOFTWARE	
HARDWARE	PHONE BOX	PHONE	
CAR WEIGHT	-	GROSS WEIGHT	-
RAIL SIZE	Ø	PLUNGER DIAMETER	2.75
MOTOR HP	3.5	PLUNGER WALL	250
MOTOR RPM	1750	MIN. PSI	-
VALVE MODEL	KV1P	MAX. PSI	-
PUMP MODEL	20-56	SAFETY MODEL	EC1-A
PUMP GPM	8.66	HOIST CABLE	3/8 Bx19
FEED PIPE	1/2	LINE VOLTAGE	208 1Ø
BUFFER CAPACITY	1400	CONTROL VOLTAGE	24
BUFFER STROKE	2.25	MOTOR STARTING	55
PLATEN EXT.(X3)	-	MOTOR RUNNING	17
INTERLOCK Ø1	MOH	INTERLOCK Ø2	MOH



(734)-246-4700
 ELEVATORCONCEPTS.COM
ELEVATOR CONCEPTS LTD
 18720 KRAUSE
 RIVERVIEW, MI. 48192

JOB NAME: X534 w/ 2-SPD ENTRY @ 2 42x60
 ADDRESS: -
 CITY: -
 ARCHITECT: -
 CONTRACTOR: -
 CUSTOMER: -
 REVISIONS: -
 DRN. BY: DJB DATE: 05/07/01 DWG# 34_4260_252