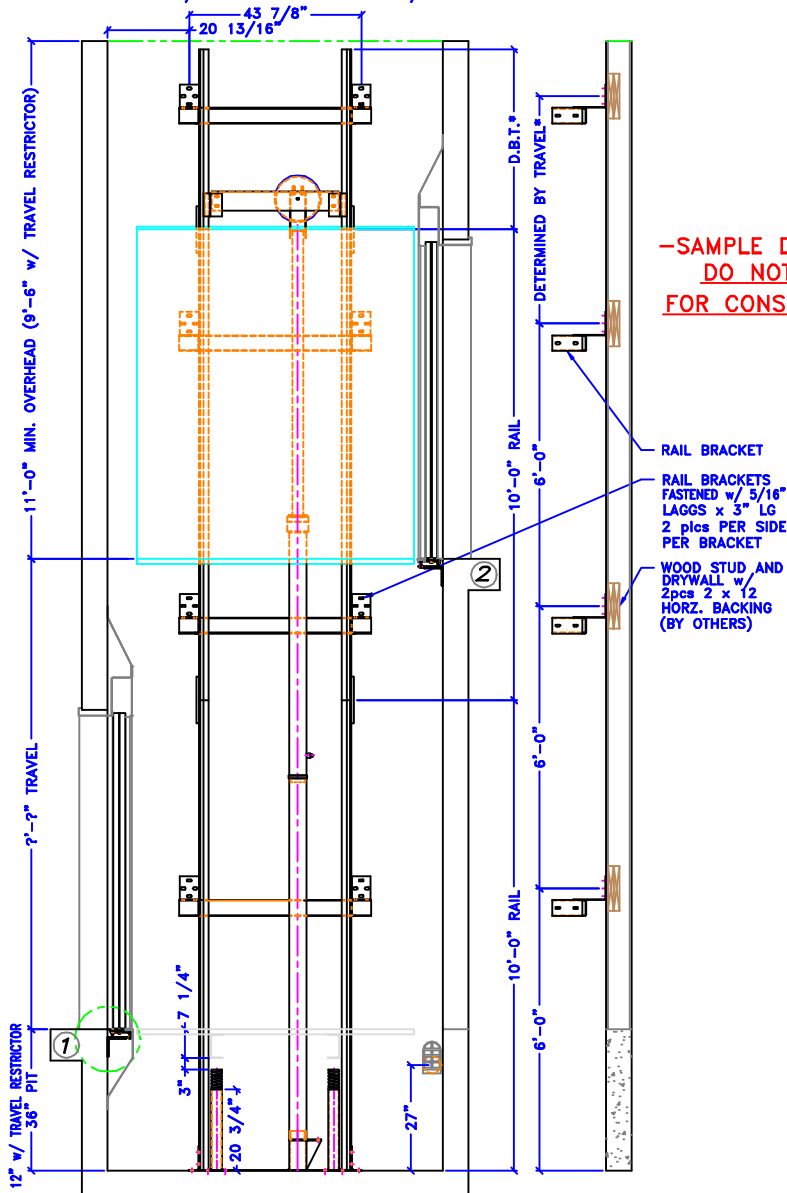


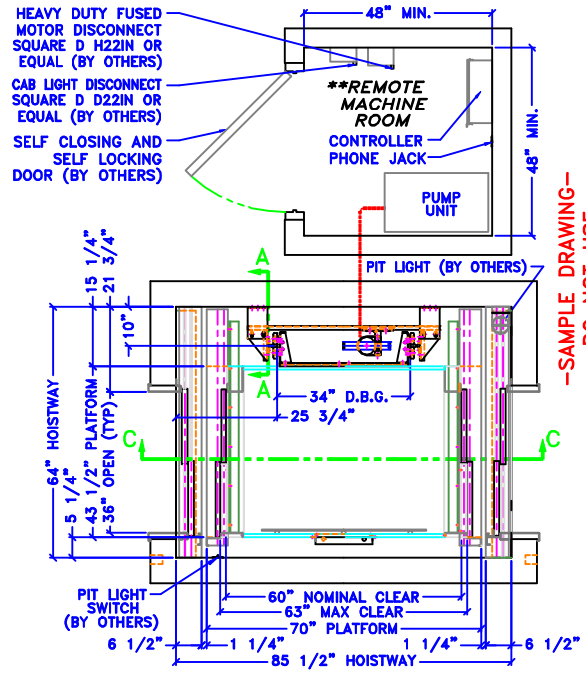
NOTE:
 PROVIDE WALL CONSTRUCTION SUITABLE FOR ATTACHMENT
 OF RAIL BRACKETS MIN. DOUBLED 2 x 12 x (THE FULL
 WIDTH OF HOISTWAY) AT ELEVATIONS SHOWN. WALL
 CONSTRUCTION @ EACH POINT MUST BE CAPABLE OF 500#
 PULLOUT LOADING w/ MAXIMUM DEFLECTION OF 1/8"



C-C HOISTWAY ELEVATION

A-A BRACKET LOCATIONS

**-SAMPLE DRAWING-
 DO NOT USE
 FOR CONSTRUCTION**



HOISTWAY PLAN
 **MACHINE ROOM NO MORE THAN
 25' FROM HOISTWAY ENTRY

SILL DETAIL

*G.C. TO PROVIDE SUPPORT AS SHOWN
 5 x 5 ANGLE SHOWN - TYP

NOTE:
 LEAVE ROUGH OPENING MIN.
 6" WIDER & 3" HIGHER THAN
 CLEAR OPENING, AS SHOWN.

HOISTWAY ENTRY ELEVATION

WORK BY OTHERS

- TO BE PROVIDED BY OWNER AND/OR GENERAL CONTRACTOR:**
- Legal hoistway of proper size, plumb within 1" per 100', and pit of proper depth.
 - A 12" square blockout in elevator pit floor, to be filled when plunger assembly has been installed.(X3)
 - 10" PVC cylinder casing per drawings.(X3)
 - Suitable machine room with legal access & clearances, properly heated & ventilated. Temperature not to exceed 35°C(95°F).
 - Hoistway guard & barricades during installation.
 - Supports for rail fastenings where specified.
 - Venting of hoistways as required by code.
 - All cutting of walls, floors, of partitions together with all repairs, grouting, patching, and painting made necessary by such cutting or changes.
 - Heavy duty fused main line switch in machine room for each elevator with feeders connected to each controller.
 - Lights, light switch, and convenience outlets in elevator machine room.
 - 120V/1Ø/20amp service & telephone outlet for each elevator connected to controller(s) in elevator machine room for car lights & accessories.
 - Light, light switch, and convenience outlet in elevator pit where required.
 - Finished cab floor coverings.
 - All other equipment necessary & not otherwise called for in elevator contract.

TIGER LIFT

MODEL	X5	SERVICE	BFD
SPEED	28 FPM	CAPACITY	750-1400
TRAVEL	?	OPERATION	SPB
NO. LANDINGS	2	NO. CAR GATES	1
CAB TYPE	STD	CAB COLOR	?
HANDRAIL TYPE	ALUMINUM	CEILING COLOR	WHITE
GATE TYPE	2 SPEED	GATE FINISH	STD
GATE OPERATION	AUTO	GATE SIZE	36x80"
FLOOR DESIGNATION	1, 2	FIXTURE FINISH	S.S.#4
ILLUMINATE	X	EMERG. LIGHT	MICROPRO.
SCREW PUMP	AUTO LIGHT	RET. CAM	
FIRE SERVICE	RUPTURE VALVE	IN USE LT	
KEY SW/MOMENT	AUTO LOWER	TANK HT.	
ARRIVAL LIGHT	KEY SW/MAINT	AUTO DOOR	
ARRIVAL GONG	CAR TOP STATION	AUTO GATE X	
DOOR MONITOR	POSITION IND.	SOFTWARE	
HARDWARE	PHONE BOX	PHONE	
CAR WEIGHT	-	GROSS WEIGHT	-
RAIL SIZE	#	PLUNGER DIAMETER	2.75
MOTOR HP	3.5	PLUNGER WALL	250
MOTOR RPM	1750	MIN. PSI	-
VALVE MODEL	KVIP	MAX. PSI	-
PUMP MODEL	20-56	SAFETY MODEL	EC1-A
PUMP GPM	8.66	HOIST CABLE	3/8 & 19
FEED PIPE	1/2	LINE VOLTAGE	208 1Ø
BUFFER CAPACITY	1400	CONTROL VOLTAGE	24
BUFFER STROKE	2.25	MOTOR STARTING	55
PLATEN EXT.(X3)	-	MOTOR RUNNING	17
INTERLOCK #1	MOH	INTERLOCK #2	MOH

ELEVATOR CONCEPTS LTD
 18720 KRAUSE RIVERVIEW, MI. 48192
 (734)-246-4700
 ELEVATORCONCEPTS.COM

JOB NAME: X534 w/ 2-SPD ENTRY @ 1&2 42x60
ADDRESS: -
CITY: -
ARCHITECT: -
CONTRACTOR: -
CUSTOMER: -
REVISIONS: -
DRN. BY: DJB **DATE:** 05/07/01 **DWG#** 34_4260_2S12