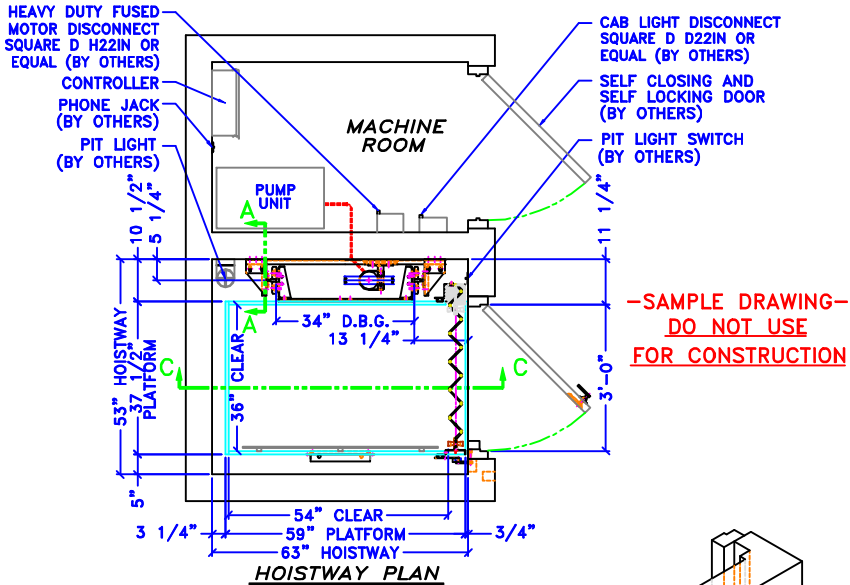


WORK BY OTHERS

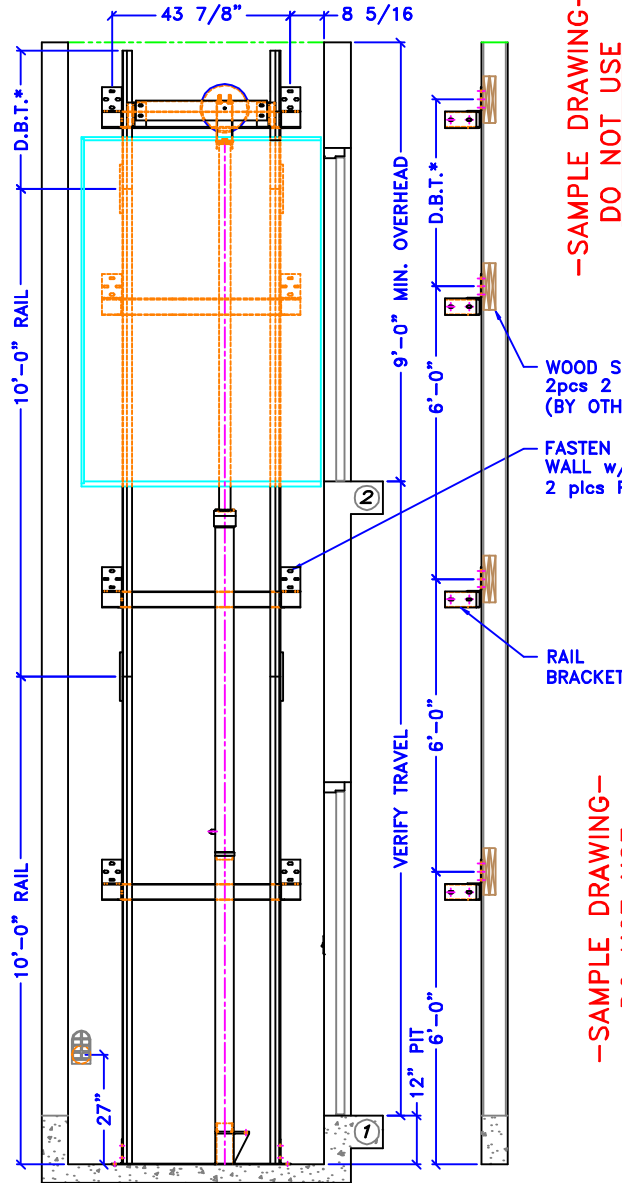
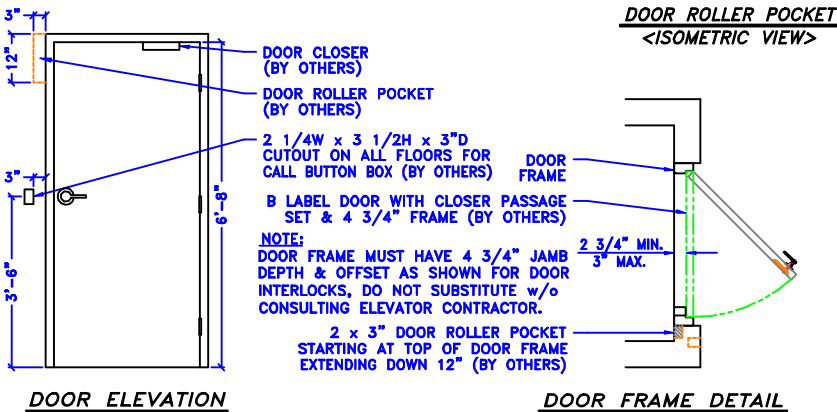
- TO BE PROVIDED BY OWNER AND/OR GENERAL CONTRACTOR:**
- Legal hoistway of proper size, plumb within 1" per 100', and pit of proper depth.
 - A 12" square blackout in elevator pit floor, to be filled when plunger assembly has been installed.(X3)
 - 10" PVC cylinder casing per drawings.(X3)
 - Suitable machine room with legal access & clearances, properly heated & ventilated. Temperature not to exceed 35°C(95°F).
 - Hoistway guard & barricades during installation.
 - Supports for rail fastenings where specified.
 - Venting of hoistways as required by code.
 - All cutting of walls, floors, of partitions together with all repairs, grouting, patching, and painting made necessary by such cutting or changes.
 - Heavy duty fused main line switch in machine room for each elevator with feeders connected to each controller.
 - Lights, light switch, and convenience outlets in elevator machine room.
 - 120V/1Ø/20amp service & telephone outlet for each elevator connected to controller(s) in elevator machine room for car lights & accessories.
 - Light, light switch, and convenience outlet in elevator pit where required.
 - Finished cab floor coverings.
 - All other equipment necessary & not otherwise called for in elevator contract.

NOTE:
 PROVIDE WALL CONSTRUCTION SUITABLE FOR ATTACHMENT OF RAIL BRACKETS MIN. DOUBLE 2 x 12 THE FULL WIDTH OF HOISTWAY AT ELEVATIONS SHOWN. MUST BE CAPABLE OF 300# PULLOUT LOADING WITH MAX DEFLECTION OF 1/8"

**-SAMPLE DRAWING-
 DO NOT USE
 FOR CONSTRUCTION**



**-SAMPLE DRAWING-
 DO NOT USE
 FOR CONSTRUCTION**



**-SAMPLE DRAWING-
 DO NOT USE
 FOR CONSTRUCTION**

(C-C) HOISTWAY ELEVATION (A-A) BRACKET LOCATIONS
 *DETERMINED BY TRAVEL

TIGER LIFT			
MODEL	X5	SERVICE	8FD
SPEED	28 FPM	CAPACITY	700
TRAVEL	VERIFY	OPERATION	SPN
NO. LANDINGS	2	NO. CAR GATES	1
CAB TYPE	STD	CAB COLOR	?
HANDRAIL TYPE	ALUMINUM	CEILING COLOR	WHITE
GATE TYPE	WOODFOLD	GATE FINISH	OK WNL
GATE OPERATION	MANUAL	GATE SIZE	36"R
FLOOR DESIGNATION	1, 2	FIXTURE FINISH	SS#4
ILLUMINATE	X	EMERG. LIGHT	MICROPRO.
SCREW PUMP		AUTO LIGHT	RET. CAM
FIRE SERVICE		RUPTURE VALVE	IN USE LT
KEY SW/MOMENT		AUTO LOWER	TANK HT.
ARRIVAL LIGHT		KEY SW/MAINT	AUTO DOOR
ARRIVAL GONG		CAR TOP STATION	AUTO GATE
DOOR MONITOR		POSITION IND.	SOFTWARE
PHONE		PHONE BOX	HARDWARE
CAR WEIGHT	-	GROSS WEIGHT	-
RAIL SIZE	Ø	PLUNGER DIAMETER	2.75
MOTOR HP	3.5	PLUNGER WALL	250
MOTOR RPM	1750	MIN. PSI	-
VALVE MODEL	KVP	MAX. PSI	-
PUMP MODEL	20-38	SAFETY MODEL	ED1-A
PUMP GPM	4.33	HOIST CABLE	3/8 8x19
FEED PIPE	1/2	LINE VOLTAGE	208 1Ø
BUFFER CAPACITY	750	CONTROL VOLTAGE	24
BUFFER STROKE	2.25	MOTOR STARTING	55
PLATEN EXT.(X3)	-	MOTOR RUNNING	17
INTERLOCK Ø1	SM RH 90°	INTERLOCK Ø2	SM RH 90°

ELEVATOR CONCEPTS LTD
 18720 KRAUSE RIVERVIEW, MI. 48192

(734)-246-4700
 ELEVAT@ECONCEPTS.COM
 JOB NAME: WOODFOLD Ø 2 - 36 x 54
 ADDRESS: -
 CITY: -
 ARCHITECT: -
 CONTRACTOR: -
 CUSTOMER: -
 REVISIONS: -
 DRAWN: DJB DATE: 04/24/01 DWG# 34_3654WF2