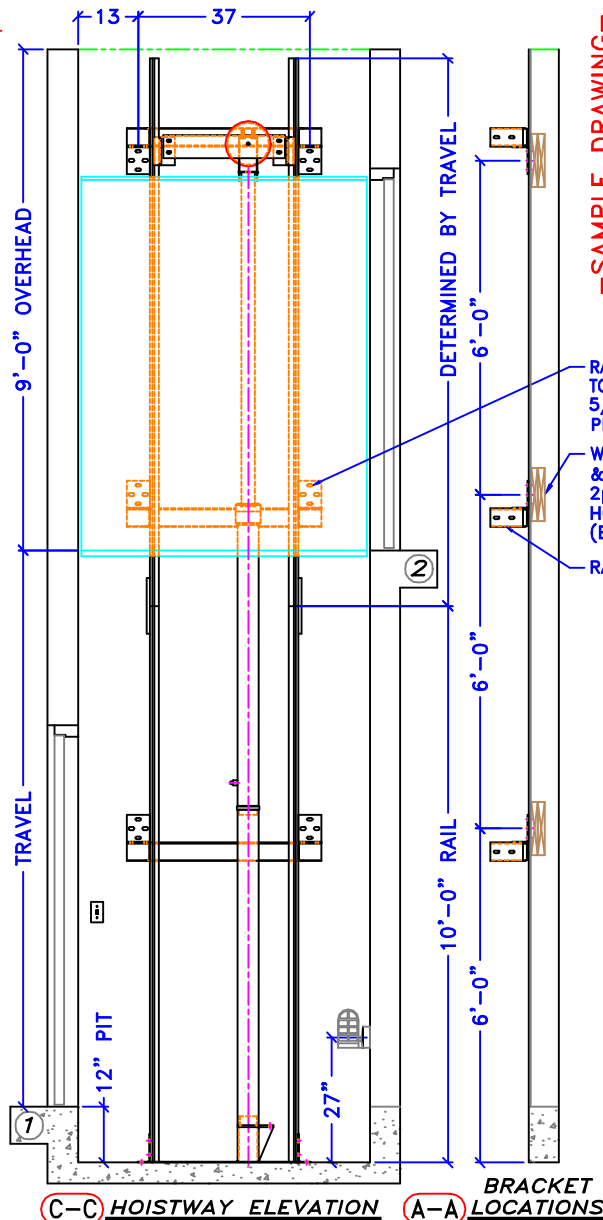
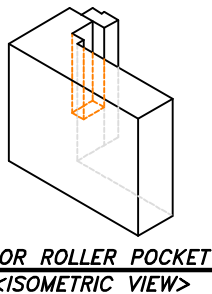
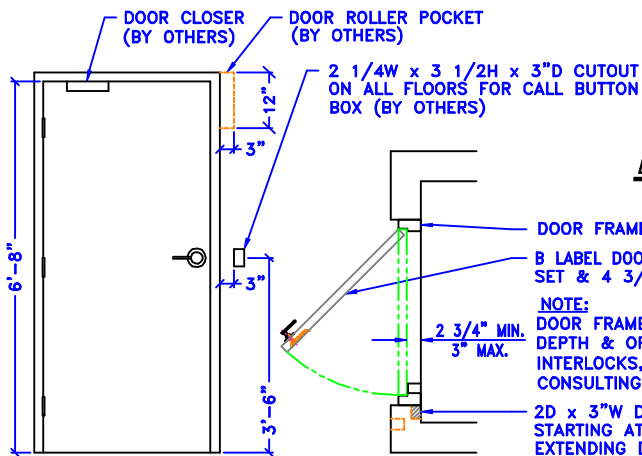
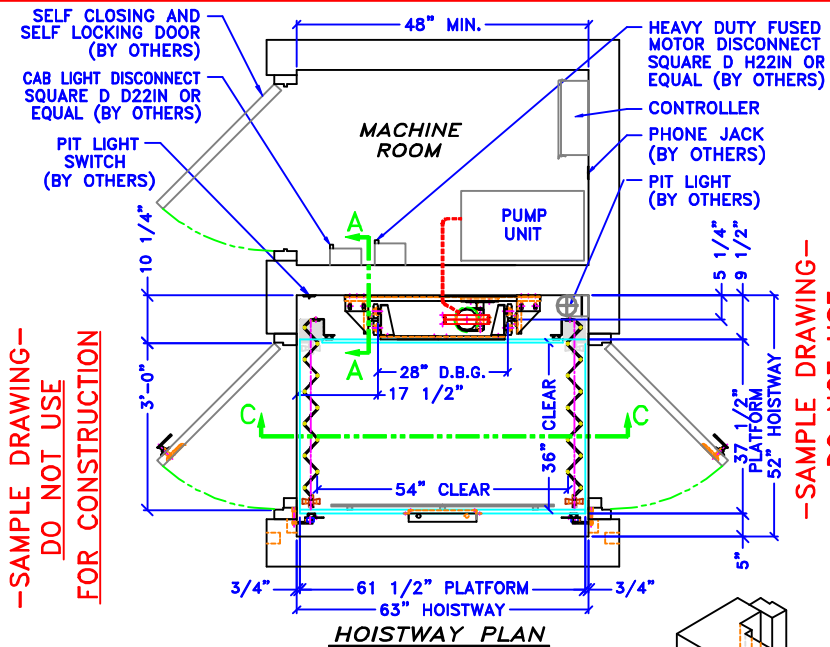


NOTE:
 PROVIDE WALL CONSTRUCTION SUITABLE FOR ATTACHMENT OF RAIL BRACKETS MIN. DOUBLED 2 x 12 x (THE FULL WIDTH OF HOISTWAY) AT ELEVATIONS SHOWN. WALL CONSTRUCTION @ EACH POINT MUST BE CAPABLE OF 300# PULLOUT LOADING w/ MAXIMUM DEFLECTION OF 1/8"

WORK BY OTHERS

- TO BE PROVIDED BY OWNER AND/OR GENERAL CONTRACTOR:**
- Legal hoistway of proper size, plumb within 1" per 100', and pit of proper depth.
 - A 12" square blackout in elevator pit floor, to be filled when plunger assembly has been installed.(X3)
 - 10" PVC cylinder casing per drawings.(X3)
 - Suitable machine room with legal access & clearances, properly heated & ventilated. Temperature not to exceed 35°C(95°F).
 - Hoistway guard & barricades during installation.
 - Supports for rail fastenings where specified.
 - Venting of hoistways as required by code.
 - All cutting of walls, floors, of partitions together with all repairs, grouting, patching, and painting made necessary by such cutting or changes.
 - Heavy duty fused main line switch in machine room for each elevator with feeders connected to each controller.
 - Lights, light switch, and convenience outlets in elevator machine room.
 - 120V/1Ø/20amp service & telephone outlet for each elevator connected to controller(s) in elevator machine room for car lights & accessories.
 - Light, light switch, and convenience outlet in elevator pit where required.
 - Finished cab floor coverings.
 - All other equipment necessary & not otherwise called for in elevator contract.



-SAMPLE DRAWING-
 DO NOT USE
 FOR CONSTRUCTION

-SAMPLE DRAWING-
 DO NOT USE
 FOR CONSTRUCTION

RAIL BRACKETS FASTENED TO WALL w/ LAGG SCREWS 5/16 x 3" LG @ 2plcs PER SIDE PER BRACKET

WOOD STUD & DRYWALL 2pcs 2 x 12 HORZ. BACKING (BY OTHERS)

RAIL BRACKET

TIGER LIFT

MODEL	X5	SERVICE	BLFD
SPEED	28 FPM	CAPACITY	700
TRAVEL	VERRY OPERATION	SPBA	
NO. LANDINGS	2	NO. CAR GATES	2
CAB TYPE	STD	CAB COLOR	?
HANDRAIL TYPE	ALUMINUM	CEILING COLOR	WHITE
GATE TYPE	WOODFOLD	GATE FINISH	OK W/VL
GATE OPERATION	MANUAL	GATE SIZE	36"(L/R)
FLOOR DESIGNATION	1, 2	FIXTURE FINISH	SS#4
ILLUMINATE	X EMERG. LIGHT	MICROPRO.	
SCREW PUMP	AUTO LIGHT	RET. CAM	
FIRE SERVICE	RUPTURE VALVE	IN USE LT	
KEY SW/MOMENT	AUTO LOWER	TANK HT.	
ARRIVAL LIGHT	KEY SW/MAINT	AUTO DOOR	
ARRIVAL GONG	CAR TOP STATION	AUTO GATE	
DOOR MONITOR	POSITION IND.	SOFTWARE	
HARDWARE	PHONE BOX	PHONE	
CAR WEIGHT	-	GROSS WEIGHT	-
RAIL SIZE	6.25#	PLUNGER DIAMETER	2.75
MOTOR HP	3.5	PLUNGER WALL	250
MOTOR RPM	1750	MIN. PSI	-
VALVE MODEL	KVP	MAX. PSI	-
PUMP MODEL	20-38	SAFETY MODEL	EC1-A
PUMP GPM	4.33	HOIST CABLE	3/8 Bx18
FEED PIPE	1/2	LINE VOLTAGE	208.16
BUFFER CAPACITY	750	CONTROL VOLTAGE	24
BUFFER STROKE	2.25	MOTOR STARTING	55
PLATEN EXT.(X3)	-	MOTOR RUNNING	17
INTERLOCK	SM RH 9Ø	INTERLOCK Ø2	SM LH 9Ø



PHONE: (734)-246-4700
 FAX: (734)-246-4700
 ELEVATORCONCEPTS.COM

JOB NAME: X528 w/ WOODFOLD Ø1&2 36 x 54
ADDRESS: -
CITY: -
ARCHITECT: -
CONTRACTOR: -
CUSTOMER: -
REVISIONS: -
DRN. BY: DJB **DATE:** 05/10/01 **DWG#** 28_3654WF12

LEVEL 1 ENTRY AS SHOWN - LEVEL 2 ENTRY OPPOSITE